

AS SEEN IN

LAB MANAGEMENT TODAY

APRIL · 2014

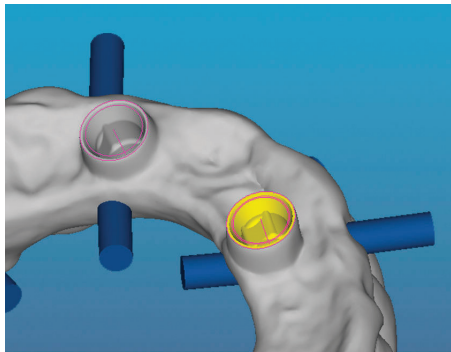
LMT

BUSINESS STRATEGIES FOR DENTAL LABORATORY DECISION MAKERS

in TODAY'S PRODUCTS
on page 83

SUM3DDental Software with Implant Feature

CIMSYSTEM's SUM3DDental software now offers an implant geometry replacement feature that gives users more precision and flexibility for implant abutment files. When the CAD file is missing or the implant geometry has to be replaced, the new feature allows users to use the geometry data in the abutment library during the CAM process, allowing complete



control of abutment geometries and optimizing the machining of implants. The new feature is available to both new and existing users with maintenance agreements. For more information, call 502-893-4546, email webb@cimsystem.com or visit www.sum3ddental.com.